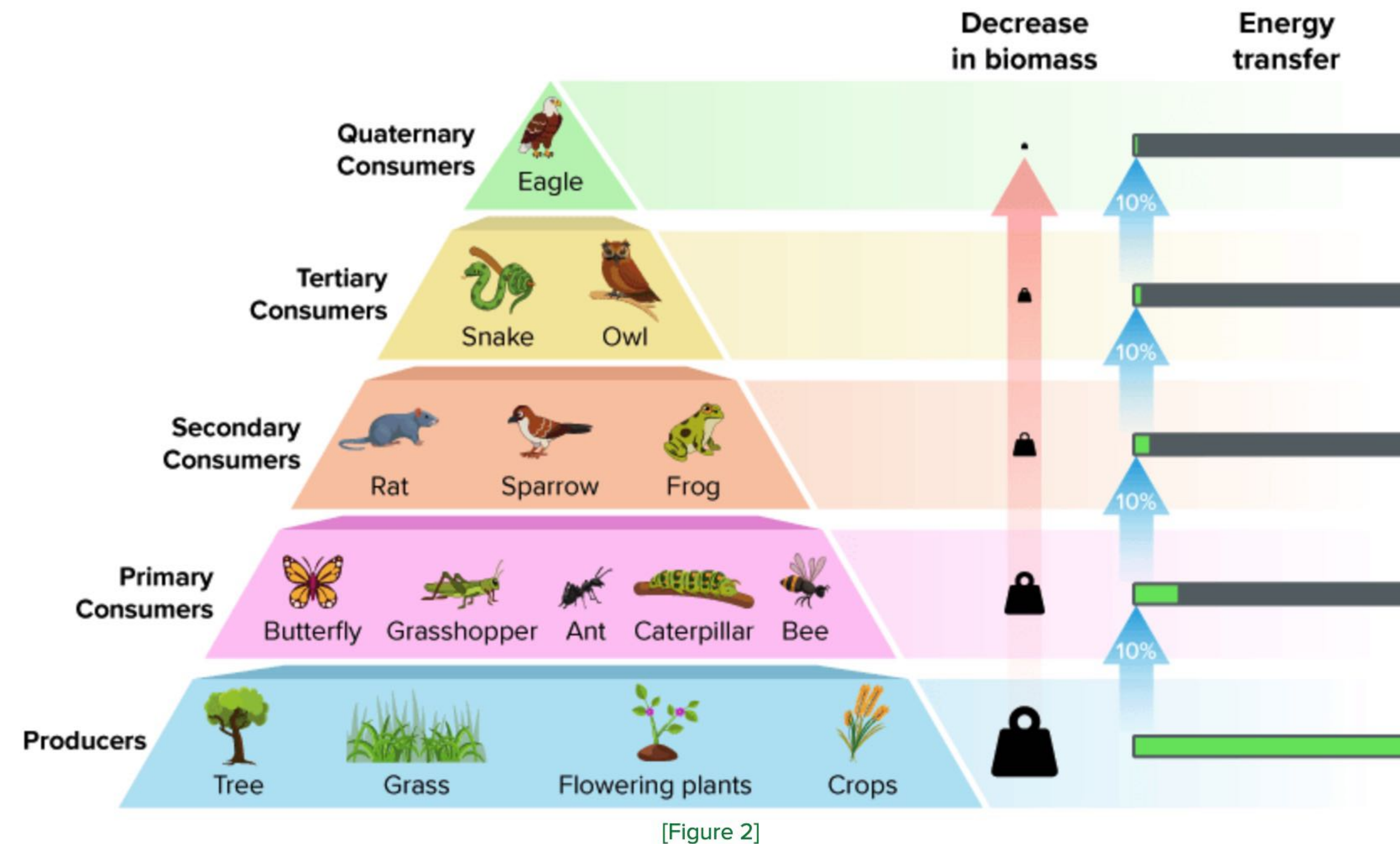


"A system in peril"

- The Natural World is in BIG TROUBLE
- > 80% wild mammal biomass lost since human civilisation started [Bar-On et al. 2018]
- Wild animals (vertebrates) declined by 73% from 1970-2020 (WWF report 2024)
- Farmed animals now greatly outweigh wild ones
- Insects have declined by 50% since 1970 (Goulson D SWT report)
- British Big Butterfly Count, 2024 worst year on record



Ecological Pyramid. This pyramid shows how energy and biomass decrease from lower to higher trophic levels.

Image from Wilkin & Brainard

How can we help?

"Every space in Britain must be used to help wildlife."

G+F recognises its role in helping wildlife although not a core activity.

- Avoidance of herbicides, pesticides, artificial fertilisers
- 'No Dig' technique helps soil ecosystem
- Wildlife habitat opportunities
 - Large variety of flowering plants, hedges and trees
 - Compost bins
 - Wild area with dense scrub and native plants outside the garden wall
 - Wildlife friendly pond
 - Nest boxes, bee hotel, hedgehog cabin, log piles, refugia sheets

In spite of these features, insect numbers are down at G+F.

What more can we do?



Looking Forward

- Wildlife hedging
- Bee slope?
- Replace the bridge
- Encourage interest at open days
- Encourage young visitors / volunteers

Tree Stewardship



About U



Looking for lesions on limes

Can you help? PhD student Helene Kile is researching increasing with bleeding cankers. If you know of any Tilia trees in the UK sho Helene would love to hear from you. Read on to find out more.



Unusual Insects

Some Highlights



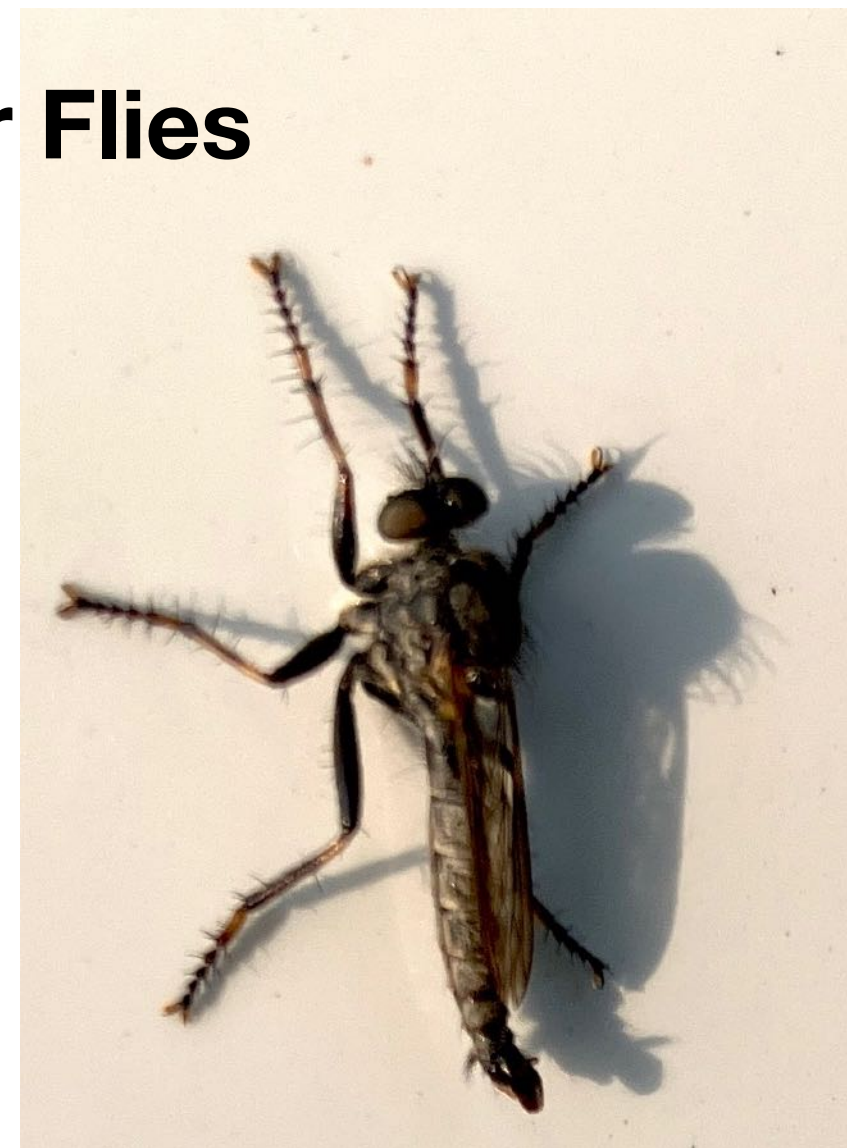
Alder Leaf Beetle



Wasp Beetle



Robber Flies



Sloe Shield Bug



Southern Oak Bush Cricket

Unusual Insects

Jersey Tiger Moth

A moth that thinks it is a butterfly?

- Day flying
- Highly coloured
- Orange hind wings (not shown)



Nest Boxes

Great tit fledglings



7

Nest box with sheltering woodmice



The Outback

Bush Camera Images taken in wild area outside the north wall. European (or red) fox and roe deer.



The Cute



The not so cute



Roe deer skull found in allotments. Probably introduced by a fox.



Recommended reference guide for identifying common UK animals



Who ate all the sweetcorn? The Search for Brock



Unlikely suspects.
Fox and carrion crow.

Sweetcorn bulldozed overnight.



A hungry worker? Surely not!



Who ate all the maize?

Strong circumstantial evidence against the accused



Gotcha, Mr Badger!

A still from a 'bush camera' video showing a single adult eating our sweetcorn.



Final Comment

If you have any suggestions for ways we can encourage more wildlife at G+F without interfering with our core business of growing produce, please let me know.

As always I encourage you to be on the lookout for wildlife in action, and let me know what you find. Its always good to share.

Gerry Robbins October 2024